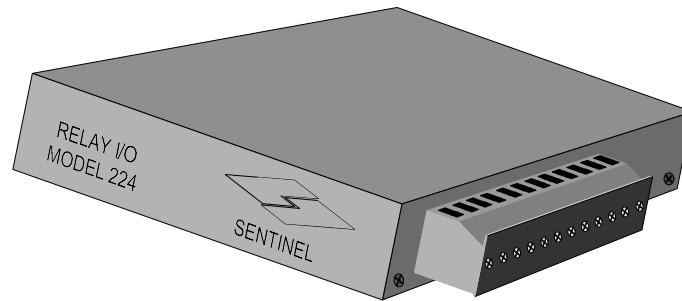




SENTINEL

User Manual

Model 224 Relay I/O



**Copyright © 2014 Sentinel Systems Corporation
All Rights Reserved**

**Sentinel Systems Corporation
1620 Kipling Street
Lakewood, CO 80215
(800) 456-9955
<http://www.SentinelSystems.com>**

Table of Contents

Hardware List.....	3
Module Setup.....	3
Appendix A External Indicators and Connectors	4
Appendix B Internal Indicators and Connectors.....	6
Appendix C Specifications	8

Hardware List

The following is the list of hardware required to install the Relay I/O module:

1. USB Cable
2. Model 224 Relay I/O Module
3. 12VDC Pluggable Power Supply
4. One (1) or two (2) 12-pin connectors (Installed on the Model 224 Relay I/O)

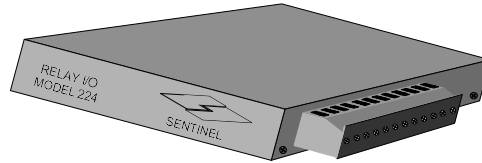
Module Software/Hardware Installation

1. Plug the 224 Relay I/O module into an available USB port on the PC.
2. A "Found New Hardware " wizard should start.
3. If the Wizard asks to connect to internet, answer NO,
4. Next it should ask if the hardware should be installed automatically.
5. Answer "Install from a specific location."
6. If using WinSen Sentinel ; Browse to the C:\Winsen\FTDI_Unified folder
7. If using WinSen Platinum; Browse to the C:\Program Files\Sentinel Systems\Platinum\FTDI_Unified folder
8. Click OK.
9. A window will come up saying the software hasn't passed windows logo testing.
10. Click "Continue Anyway"
11. Then the wizard should finish.
12. Plug the power supply connector into the round hole on the end of the Relay I/O.
13. Plug the power supply into an AC outlet. If using a UPS, ensure there is sufficient capacity. Interruption or brownouts in the AC supply can cause invalid operation of the Relay I/O.
14. Connect all external wiring to the Relay I/O (Siren, trouble indicators, Area or Perimeter Beam control, etc)
15. Start Winsen Sentinel or Platinum.
16. Test the Relay I/O connections by simulating the conditions being monitored or controlled.
17. The Relay I/O is now ready for normal operation.

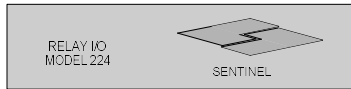
Appendix A External Indicators and Connectors

REV	DESCRIPTION	APPROVAL	DATE
A	DRAWING RELEASE	B. JENNINGS	06/18/2013

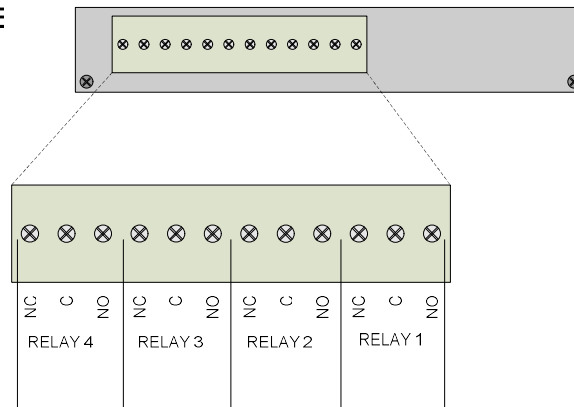
MODEL 224 RELAY I/O



FRONT VIEW



RIGHT SIDE VIEW



DRAWING 35

NOTES:

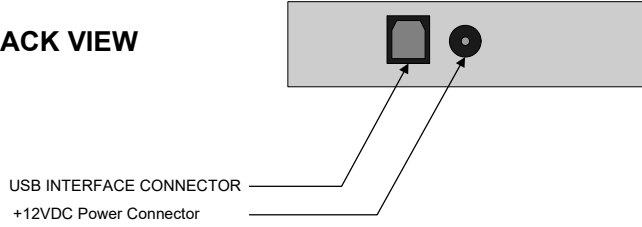
1. The Reset Switch provides a power-down reset capability for the devices connected to the CIM. Note, however, that this reset will only function for those devices powered from the CIM. Any devices powered by additional power supplies will NOT be powered-down/reset.

SENTINEL SYSTEMS CORPORATION 1620 KIPLING STREET LAKEWOOD, CO 80215			
APPROVAL	DATE	TITLE	
DWN BNJ	06/18/2013	MODEL 224 RELAY I/O EXTERNAL CONNECTOR AND WIRING CONNECTIONS	
CHECKED	06/18/2013	SIZE	REV. A
		A	
		DWG NO:	050-1306-01
		SCALE:	NONE
		SHT.	1 OF 2

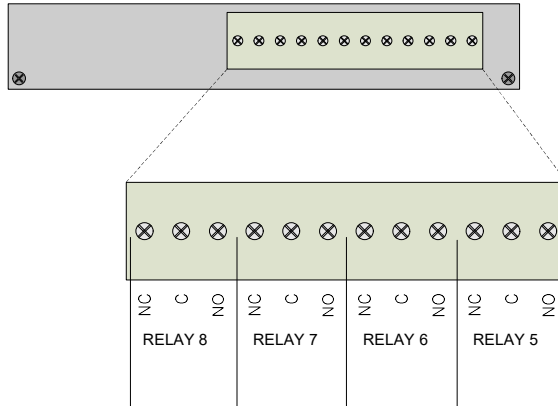
REV	DESCRIPTION	APPROVAL	DATE
A	DRAWING RELEASE	B. JENNINGS	1/24/2014

MODEL 224 RELAY I/O (con.)

BACK VIEW



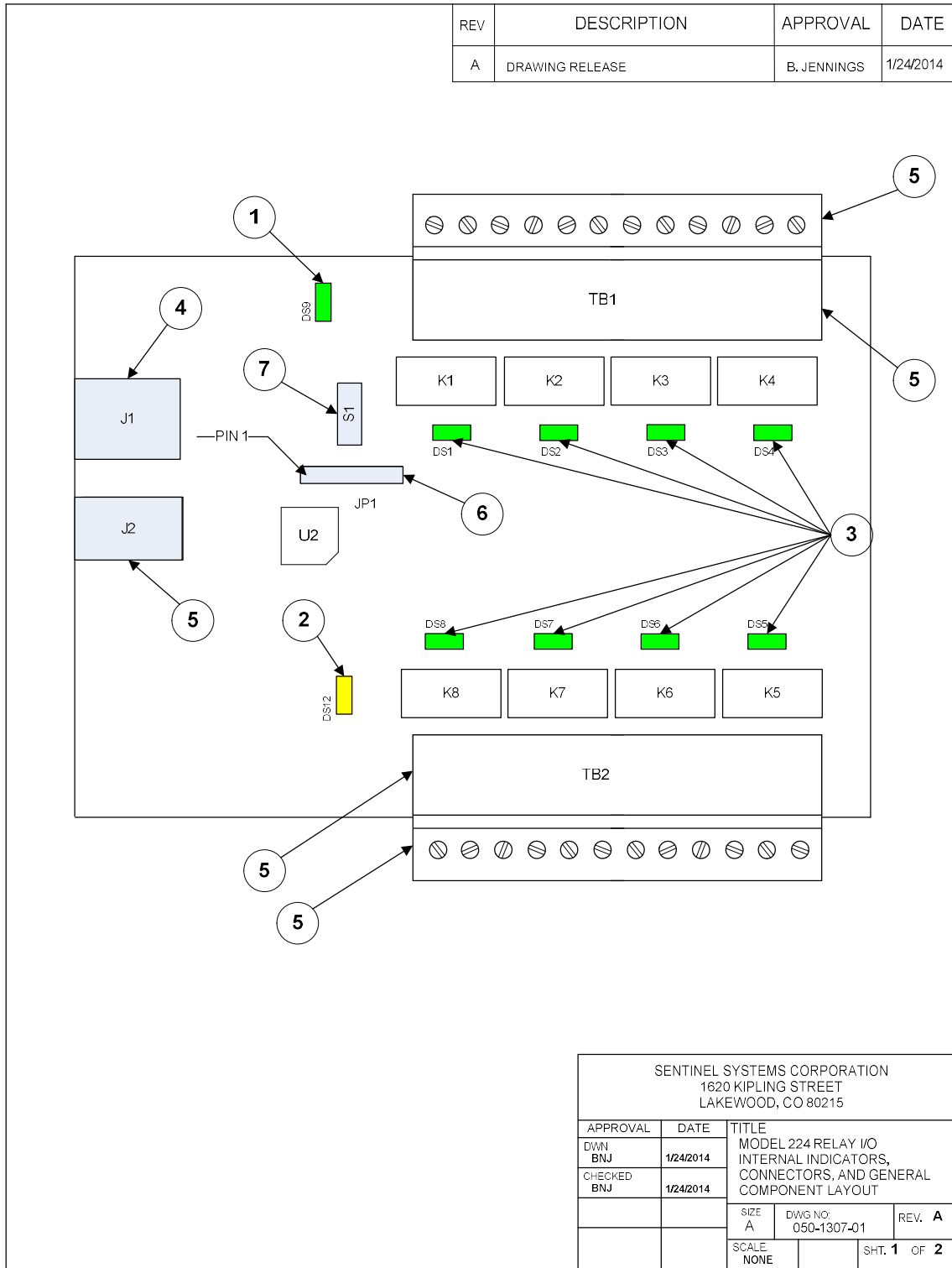
LEFT SIDE VIEW



DRAWING 35

SENTINEL SYSTEMS CORPORATION 1620 KIPLING STREET LAKEWOOD, CO 80215			
APPROVAL	DATE	TITLE	
DWN BNJ	1/24/2014	MODEL 224 RELAY I/O EXTERNAL CONNECTOR AND WIRING CONNECTIONS	
CHECKED	1/24/2014		
		SIZE A	DWG NO: 050-1306-01
		SCALE: NONE	REV. A SHT. 2 OF 2

Appendix B Internal Indicators and Connectors



Appendix C Specifications

REV	DESCRIPTION	APPROVAL	DATE
A	DRAWING RELEASE	B. JENNINGS	1/24/2014

Item #	Specification															
USB Power	< 20 mA															
Ext Power Supply	<table border="1"> <thead> <tr> <th></th> <th>Min</th> <th>Nominal</th> <th>Max</th> <th>Units</th> </tr> </thead> <tbody> <tr> <td>Voltage</td> <td>7</td> <td>12</td> <td>17</td> <td>VDC</td> </tr> <tr> <td>Current</td> <td colspan="4">250 mA Max All Relays Active</td> </tr> </tbody> </table>		Min	Nominal	Max	Units	Voltage	7	12	17	VDC	Current	250 mA Max All Relays Active			
		Min	Nominal	Max	Units											
Voltage	7	12	17	VDC												
Current	250 mA Max All Relays Active															
Relays	Quantity	8														
	Contact Arrangement	1 Form C														
	Nominal Switching	2 A, 30V DC														
	Max Switching Voltage	220V DC														
	Max Switching Current	2 A														
	Max Switching Power	60 W DC														
	Life	Mechanical Min. 10 ⁸ (at 180 cpm)														
Electrical Min. 10 ⁵ (2 A 30 V DC resistive), 5X10 ⁵ (1 A 30 V DC resistive) (at 20 cpm)																

SENTINEL SYSTEMS CORPORATION 1620 KIPLING STREET LAKEWOOD, CO 80215			
APPROVAL	DATE	TITLE	
DWN BNJ	1/24/2014	MODEL 224 RELAY I/O HARDWARE SPECIFICATION	
CHECKED BNJ	1/24/2014		
		SIZE A	DWG NO: 050-1308-01
		SCALE: NONE	REV. A SHT. 1 OF 1